

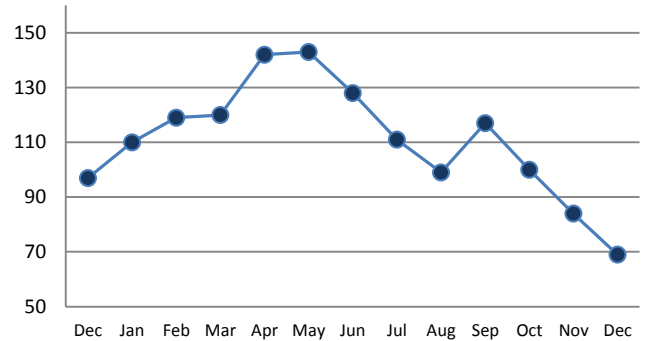
**PENDING**

Price Range	New This Month			Year-To-Date		
	2012	2013	% Change	2012	2013	% Change
0 - 149,999	0	0	--	0	3	--
150,000 - 199,999	0	0	--	6	1	-83.3%
200,000 - 299,999	2	1	-50.0%	28	36	28.6%
300,000 - 399,999	4	0	-100.0%	31	46	48.4%
400,000 - 499,999	2	0	-100.0%	38	38	0.0%
500,000 - 599,999	2	0	-100.0%	39	29	-25.6%
600,000 - 699,999	1	0	-100.0%	17	36	111.8%
700,000 - 799,999	0	1	--	22	34	54.5%
800,000 - 899,999	0	0	--	25	15	-40.0%
900,000 - 999,999	0	0	--	12	13	8.3%
1,000,000 - 1,999,999	0	2	--	49	53	8.2%
2,000,000 +	1	2	100.0%	9	11	22.2%
<b>TOTALS</b>	<b>12</b>	<b>6</b>	<b>-50.0%</b>	<b>276</b>	<b>315</b>	<b>14.1%</b>

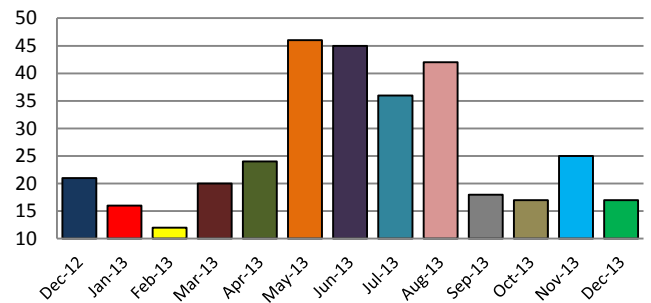
**SETTLEMENTS**

Price Range	New This Month			Year-To-Date		
	2012	2013	% Change	2012	2013	% Change
0 - 149,999	1	0	-100.0%	1	4	300.0%
150,000 - 199,999	1	0	-100.0%	7	2	-71.4%
200,000 - 299,999	2	3	50.0%	30	38	26.7%
300,000 - 399,999	1	3	200.0%	26	54	107.7%
400,000 - 499,999	2	2	0.0%	38	33	-13.2%
500,000 - 599,999	2	2	0.0%	38	28	-26.3%
600,000 - 699,999	2	2	0.0%	20	38	90.0%
700,000 - 799,999	6	2	-66.7%	24	35	45.8%
800,000 - 899,999	1	1	0.0%	16	14	-12.5%
900,000 - 999,999	0	0	--	16	16	0.0%
1,000,000 - 1,999,999	3	2	-33.3%	47	47	0.0%
2,000,000 +	0	0	--	6	9	50.0%
<b>TOTALS</b>	<b>21</b>	<b>17</b>	<b>-19.0%</b>	<b>269</b>	<b>318</b>	<b>18.2%</b>

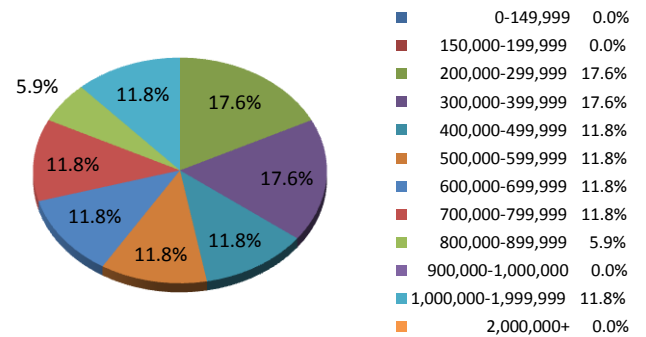
**INVENTORY TREND**  
*Listings Active at End of Month*



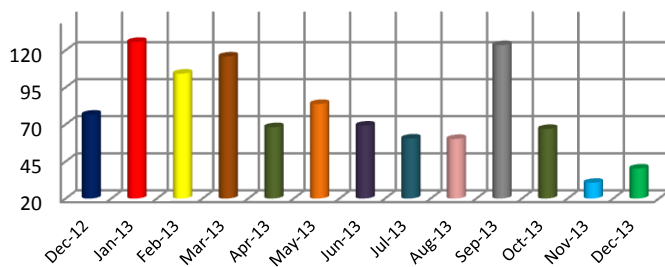
**SALES TREND**  
*Settlements Per Month*



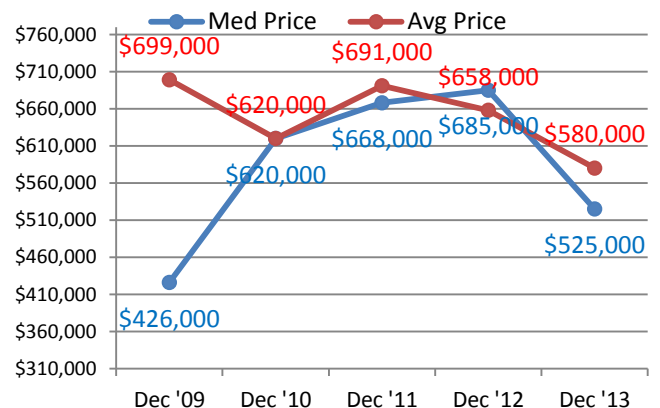
**SETTLEMENTS BY PRICE RANGE**



**AVERAGE DAYS ON MARKET**



**AVERAGE & MEDIAN PRICE**



DATA SOURCE: Trend Multiple Listing Service

NOTES: Properties not listed through this MLS are not reflected. The term "sales" represents ratified purchase contracts. Current year information is preliminary and subject to revision. Current year-to-date contract information may not equal the sum of the monthly contract totals reported above